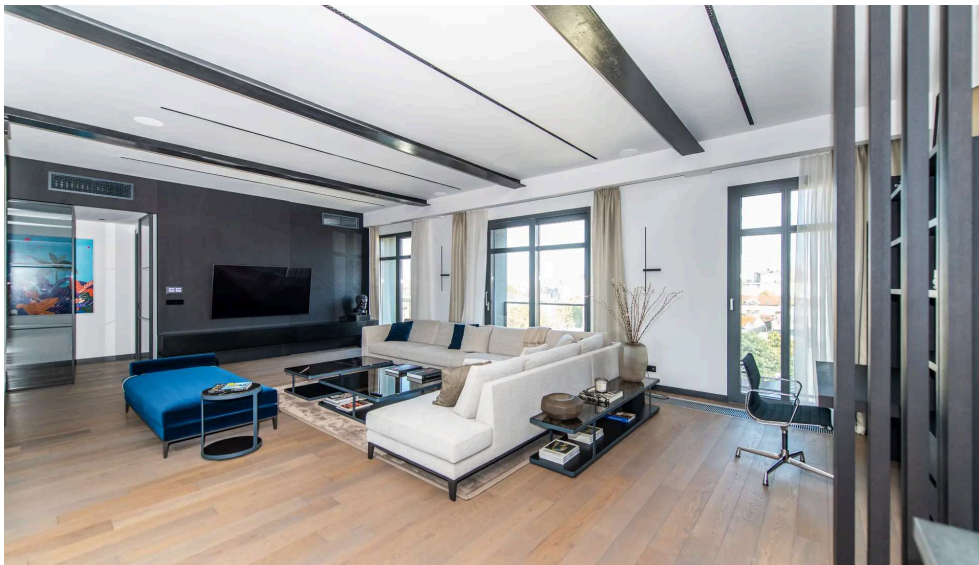


Exceptional Apartment in a Prime Location on Upper Dorćol

Dorćol, Belgrade 11000, Serbia





3 bedrooms

2 bathroom

204 m2

Description

This exceptional apartment, occupying the entire floor, spans 2004 square meters of carefully designed space. Upon entering, you are greeted by a spacious and elegantly furnished living room with a fireplace, divided into zones for relaxation and entertainment. The apartment features two large bedrooms, each with its own en-suite bathroom. A standout feature of this apartment is the floor-to-ceiling windows on both sides, offering incredible views of the historic city center and flooding the space with natural light. The apartment is unused and equipped with the highest quality furnishings and appliances, including Miele kitchen appliances, custom-built furniture, Poliform sofas, a smart lighting and air conditioning system, and an integrated Sonos sound system. The apartment comes with one parking space. This property represents a prime opportunity for those seeking luxury and comfort in the heart of the city.

Terrace

Elevator

Fireplace

Details

Price per m2	9803.92
Floor	5 / 7
Furnishing	Fully-Furnished
Parking	1