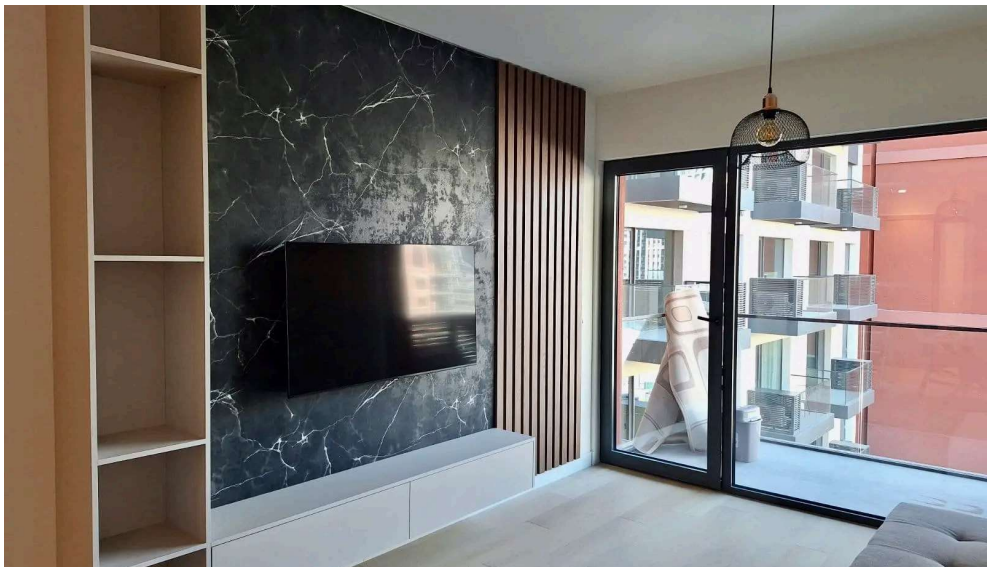


# Luxury two-bedroom apartment in Belgrade Waterfront, BW King's Park

Vudroa Vilsona, Beograd, Serbia





1 bedrooms

1 bathroom

53 m2

Description

Luxury two-bedroom apartment in Belgrade Waterfront, located in the BW King's Park Residence building. The apartment consists of an entrance hallway, a spacious living room that opens onto a terrace with a river view, a kitchen with a dining area, a bedroom, a bathroom, and a laundry room. BW King's Park Residences is a 15-story building with 233 residential units, designed to meet all criteria of exclusivity and comfort. It features an elegant lobby with a reception area and 24/7 security. The building is positioned next to Sava Park, between Woodrow Wilson Boulevard and the new road running parallel to Savska Street. It is also well connected to key parts of the city through newly developed road infrastructure. A garage parking space is available on the first underground level (-1) at a price of €25,000.

Details

Price per m2	5471.70
--------------	---------

Parking

1