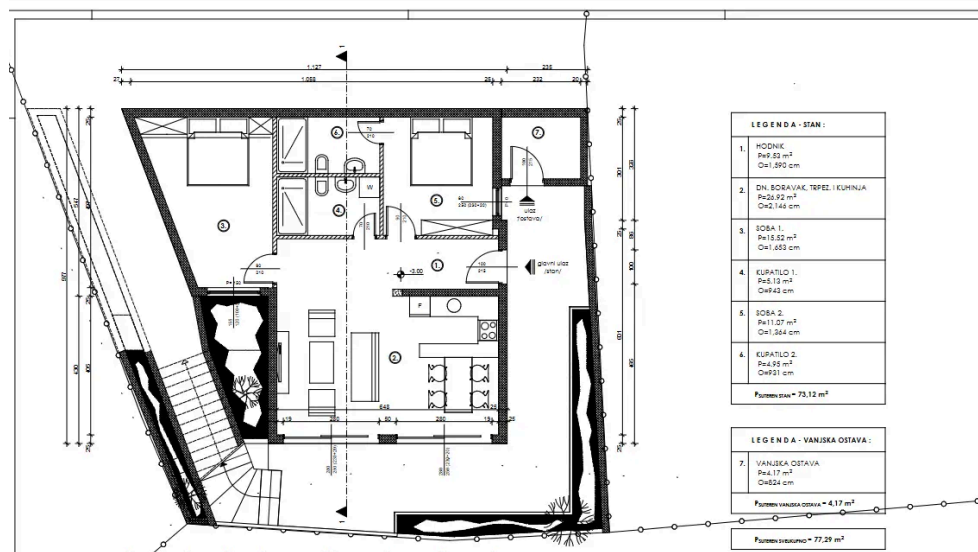


New residential building in Radovici, Luštica

Luštica, Tivat 85320, Montenegro





2 bedrooms



2 bathroom

77.29 m²

Description

A newly built residential building in Radovići, featuring two spacious two-bedroom apartments and one duplex. The building is located in the immediate vicinity of the newly developed Centrale neighborhood in Luštica. It consists of two two-bedroom apartments, 77.29 m² and 80.55 m², each for sale with a dedicated parking space, as well as one duplex of 147/58m² with two bedrooms, a spacious terrace, and two parking spaces. The building is in the final stage of construction, which means it is a new development—ideal for those seeking a modern and unused living space. The prices start from EUR 2,400/m² up to EUR 2,700/m². Thanks to its functional layout and peaceful surroundings, it represents an excellent choice for family living, renting, or a long-term investment.

Near Park

Near Airport

New Construction

Near Public Transportation

Near Shopping

Near Schools

Near Medical Facility

Near Beach

Near Downtown

Details

Price per m2	2400.00
Furnishing	Not-Furnished
Parking	1